



PLANT BIOSIMULANTS

# TALETE

**Increases Crop Water  
Productivity**



*Where science serves nature*

# What is Talete?

Talete works directly on plant physiology, helping crops to increase crop water productivity both in conditions of adequate water availability and permanent or temporary water scarcity.

## The physiological effects on plants



**Better water retention and absorption**

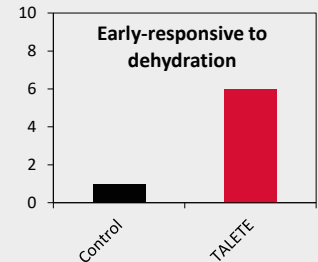
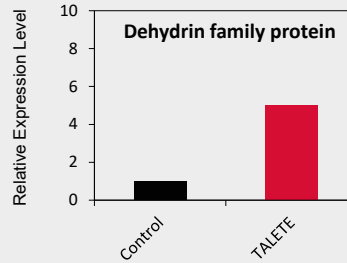


**Water use optimization**

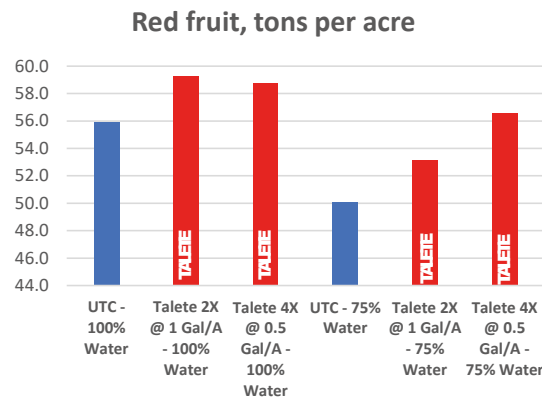
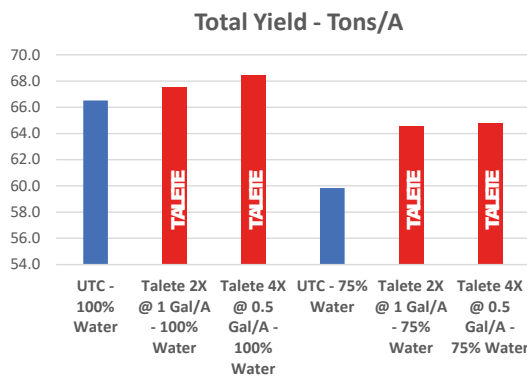
## Why choose Talete?

- Increases water binding capacity;
- Provides stability to other proteins and macromolecules;
- Drives rapid change in the activity of cells depending on the presence, absence, and concentration of water.

TALETE induces several genes belonging to the dehydrin and ERD families



## Trial UC Davis Trial 2021 Processing Tomato - Assessments



All Talete treatments resulted in increased yields. Particularly pronounced was the disparity between the treated and untreated plots that were deficit irrigated at 75% ET, resulting in increases of four tons per acre.

Talete applications also resulted in a higher percentage of red fruit, resulting in a three ton increase of red fruit at 100% ET and a six ton increase at 75% ET

## Directions for use

Use **Talete** to increase crop water productivity in any case, for the entire crop cycle with particular attention to the following phenological stages:

APPLICATION METHOD	CROP	APPLICATION TIMING	RATE (gal/a)
 <b>Fertigation</b>	Tomato, pepper, melon, zucchini, cucumber	From fruit setting	0.5-1.0
	Table grape	From fruit setting	1.0
	Almond	1 <sup>st</sup> application, from flowering/fruit setting	0.5-1.0
	Other orchards (pomaceae, drupaceae)	From fruit setting	1.0
	Potato	Tuber initiation	0.5-1.0
	Corn	From 4 leaves unfolded to tasseling	1.0

For extensive irrigation systems ensure a uniform distribution of treated water.